

The Howland Quarterly

Published by

THE PILGRIM JOHN HOWLAND SOCIETY

(Founded in 1897)

Volume 90

June 2025

No. 2

| | |
|--|----|
| From the President, <i>Edward C. Howland</i> | 2 |
| News and Announcements..... | 3 |
| Banquet and Meeting Details..... | 3 |
| Update on Repairs for Howland House, <i>Peter Arenstam</i> | 4 |
| Update on Rocky Nook National Register Project..... | 5 |
| “Must See” Places to Visit In and Near Plymouth..... | 6 |
| News From England: Fenstanton, <i>Rev. Rosie Tallowin</i> | 10 |
| News From England: Henlow, <i>James Burgess</i> | 10 |
| Dues, <i>Peter Arenstam</i> | 12 |
| 2025 Banquet Speaker: Patrick Browne..... | 13 |
| Editor’s Wish List..... | 14 |
| New Members, <i>Jean Albert</i> | 15 |
| From the Editor, <i>Gail Ann Adams</i> | 15 |
| “Other” Mayflower Family Societies..... | 16 |
| Banquet and Meeting Reservation Form: Deadline is July 18, 2025 | 19 |
| Bob Hoxie’s Plan for the Joseph Howland Site at Rocky Nook..... | 20 |



Photo courtesy of Eldon Gay, Historian.

This beautiful apple tree in full blossom is located at the Joseph Howland site at Rocky Nook. Last year Eldon cleared all the vines and brush around this tree, and it came back to life! Imagine how stunning it will look when the rest of the area is cleaned out and becomes a meadow! Please see update on page 5 and Bob Hoxie’s meadow map on the back cover.

The Howland Quarterly

Published by: THE PILGRIM JOHN HOWLAND SOCIETY, INC.

OFFICERS:

President: Edward C. Howland
Vice President: Andrew R. Whipple
Secretary: Lois Nelson
Registrar: Jean H. Albert
Historian/Archivist: Eldon Gay
General Treasurer: Deborah Brownell

APPOINTED:

Editor, The Howland Quarterly: Gail Ann Adams
Acting Custodian, Rocky Nook: Eldon Gay
Admiral, Shallop Elizabeth Tilley: Michael A. Goldstein
Counselor: Open
President Emeritus: Ashley Smith

EXECUTIVE DIRECTOR:

Peter Arenstam

DIRECTORS:

Gail Ann Adams
Robert Blount
Craig Howland
Stephen Howland
Lynda J. Hylander
Jane Murphy
Joanne Pratt
Saundra St. Louis
Raymond T. Wing

To contact, please go to our website at:

<https://pilgrimjohnhowlandsociety.org/board.php>

Mailing address:

The Pilgrim John Howland Society, P.O. Box 1479, Plymouth, MA 02362-1479
Howland House: 508-746-9590

From the President – Edward C. Howland

Dear Cousins,

This spring with Lexington and Concord, and the Battle of Bunker Hill, starts the commemoration of the 250th anniversary of the American Revolution. So many years ago our ancestors fought against (or with) one of the great powers in Europe—and against desperate odds, won independence from the United Kingdom. Over the next few years, there will be many opportunities to reflect on the Howland legacy during the American Revolution, and I would encourage you to take the opportunity to perhaps dig a little deeper about the lives of those who lived during those dramatic days.

The Society has been active over this winter, having received plans for the meadow at Rocky Nook, progress on putting Rocky Nook on the National Register of Historic Places, repairing the winter damage at the Jabez Howland House, planning for the annual meeting, and much more. We look forward to updating you at the annual meeting about our activities over the last year.

Our annual meeting is more than just a business meeting - it is an opportunity to connect with cousins, share genealogy tips, and share family history. Patrick Browne, Executive Director of the Plymouth Antiquarian Society, is our speaker at dinner on August 8. He will be speaking on the South Shore and the Revolution - a perfect topic, given the start of celebrations this year.

I hope to see many of you there!

-Edward (Teddy) Howland

Editor's Note: For submission details for our ancestor's participation in the American Revolution, please see page 14.

News and Announcements

The 128th **Annual Meeting and Banquet** will be held **August 8-9, 2025**.

Archaeological Dig

There will be a dig on August 6 and 7, 2025.

Please contact Eldon Gay at elgay@verizon.net for information.

Dues and Donations Link

We have a link to pay our dues (both international and domestic):

https://pilgrimjohnhowlandsociety.org/Square_-_donation___Dues.

YouTube

We have several outstanding videos on YouTube. Go to YouTube.com, type:

Howland Society, hit “return.” Our site is labeled with a large brown “H” in a circle.

Please subscribe and hit the “like” button. This helps to get our videos out to the public.

IMPORTANT

Please make sure your **email address** on our members website is correct. If you are having trouble accessing the site, please contact Executive Director, Peter Arenstam, at:

executivedirector@pilgrimjohnhowlandsociety.org.

Job Openings

Do we have any lawyers? We need a **Counselor**.

Please contact Peter Arenstam, Executive Director at:

executivedirector@pilgrimjohnhowlandsociety.org for information.

Quarterly **Editor**: An outstanding way to immerse yourself in our history!

Contact gailsline@aol.com.

The Pilgrim John Howland Society Annual Banquet, Meeting and Program

The weekend begins **Friday, August 8** at **4:30pm** with a wreath laying on John Howland’s grave at Burial Hill. (Directions are on page 7). The Friday evening Banquet will be held at the Plimoth Patuxet Museums (formerly Plimoth Plantation) in Gainsborough Hall, located in the Visitor’s Center. Social time begins at **5:30pm** with a cash bar. Dinner will be served at **6:30pm** followed by our program speaker Patrick Browne. Dinner will be served “Family Style.” The New England Harvest Feast includes: “Apple Cider, Cheate Bread and Butter, Romaine and Watercress Sallet, Mussels with Parsley and Beer, Turkey, Cabbage with Leeks and Onions, Sweet Pudding of Native Corn, Stew’d Pompion, Roasted Pork, Fish, Cheesecake with Almonds and Spices, and a Platter of Cheese and Fruit.” Historical interpreters will be there to talk about their history as each course is served.

Our Annual Business Meeting and Luncheon will be held on **Saturday, August 9** at **10:30am** in the Accomack Building, which is located to the left of the Visitor’s Center as you enter the grounds. The Hometown Buffet features Field Greens with Citrus Vinaigrette, Baked Scrod with Herbed Crumb Topping, Stuffed Chicken, Wild Rice Blend, Roasted Vegetables, Assorted Dessert Bars, Tea and Coffee.

Jabez Howland House will be open, so stop by a sit ‘a spell.

Pages 6-9 list many places to visit.

The Banquet and Luncheon Meeting Reservation Form is on page 19.

Update on Repairs to Howland House Peter Arenstam, Executive Director



We have definitely turned a corner in the weather in Plymouth. We had a long, cold winter and the spring has been wet and windy. Recently the sun has been shining, plants are coming back to life, and it feels like summer can't be too far away.

With the moderation in the weather, I have been able to complete a number of repairs and ongoing care of the Jabez Howland House. To begin, I have reinstalled the newly repaired storm windows. These windows provide an extra level of protection that we typically leave on the house

until the weather warms up for good in June. I have repaired and reinstalled the two sash windows that were broken. I want to thank Andrew Whipple, the Howland Board vice-president who came to Plymouth this spring for other reasons, but took some time out of his schedule to help paint the repaired windows. The sill repair is complete and painted.

Now that the threat of frost is past, I have turned my attention to the gardens. We lost a number of plants over the winter. In consultation with our local farm and garden store I learned that because of the lack of rain early last winter followed by a long stretch of very cold weather, many people lost plants in our area. At the Howland House we lost a Rosemary plant, a lavender plant, a number of herbs, and some ornamental plants in our 2020 memorial garden on the east side of the house. I have been cleaning up the garden beds and replacing plantings as I have time.



Executive Director Peter Arenstam repaired several windows.



To tend the gardens, we need water. In the winter we have the water at the house shut off and the pipes filled with anti-freeze because the house has no insulation and the crawl space, through which the water pipes run, can freeze. The water is back on, our HVAC system, which helps provide a consistent temperature for the historic artifacts inside, has been serviced and marks one more step toward the start of our 2025 season.

As noted in the March *Quarterly*, the Howland House will open for the season on June 13th. We will be open Thursday – Mondays through the end of October and as always Howland Society members can visit the house for free.

Editor's Note: As reported in the March 2025 *Quarterly*, Peter arrived at the House to find six windows had been broken. Four were storm windows and two older sash style windows.



Newly planted lavender, chamomile, and lemon balm.



Vice President Andrew R. Whipple lent a hand painting the repaired windows.



The sill along the bottom of the House has been repaired and painted.



New rosemary, English thyme, and basil were planted in the hillside garden.

Update on the Rocky Nook National Register of Historic Places Project

The Howland Society and specifically Eldon Gay has been working relentlessly on the project of getting the Rocky Nook property listed on the National Register of Historic Places. Most recently in conjunction with Bob Hoxie, of Great Hill Horticultural Services, we have been mapping out a plan for how to bring a portion of the property back to what it might have looked like when John and Elizabeth’s son Joseph and Daughter-in-law Elizabeth Southworth Howland lived there in the mid 1600’s. The property is on the west side of modern Howland Lane and is the archaeological site where Joseph’s house foundation is located.

As Bob notes in his plan, “The purpose of the project is the conservation of Joseph Howland House archaeology site for visitors and wildlife to share the open space that was once an orchard and meadow. Removing the under growth will allow the exposure of the ancient stone walls that are the oldest in New England. This plan will restore it to its original state and allow management of the area for conservation purposes in a natural setting as well as serving as a buffer for the wetlands behind the tree line.”

Because the property borders the Jones River there is an area designated as wetlands that modern regulations require, we get permission from the local conservation commission prior to starting work. Eldon and I met with the town of Kingston’s committee over two sessions where the project was discussed, options considered and after which a permit was granted to begin work.

Eldon has a proposal from a local landscaping company to do the initial work of clearing some of the invasive species of plants, cut away dead or damaged trees and expose the ancient stone walls on the Joseph Howland land. The archaeological features and natural resources native to the area will be protected and preserved as part of the process. When the site is cleaned up Bob Hoxie will guide the sowing of grasses and plants that would have been part of the land in the 17th century. Ultimately our goal remains to bring the area back to what it may have looked like when the Howlands last lived at Rocky Nook and offer modern visitors a tangible glimpse of our family history.

“Must See” Places to Visit in and Near Plymouth

You may not have time to see all the sights while in Plymouth, but here is a list of the pilgrim hot spots to help you plan ahead.

Jabez Howland House

Come “home” to Howland House, once owned by John and Elizabeth’s son Jabez and most certainly slept in by our Pilgrim ancestors. Howland House is thought to be the only house still standing in Plymouth that Pilgrims slept at. Take a tour with our hostesses and see many 17th-19th century artifacts. Be sure to check out the exhibits on the second floor. “Our” house is located at **33 Sandwich Street. 508-746-9590**

Howland Historic Sidewalk Marker, Leyden Street

Dedicated in September 1978, it reads: “On This Lot Stood the First House of the Mayflower Pilgrim John Howland, The Pilgrim John Howland Society, 1978.” Clinton W. Sellow did the research and was responsible for this very important marker. It is located at **16 Leyden Street.**

Rocky Nook

This was the home of John and Elizabeth from 1638/9-1672/3 when John died. They bought the property/house from John Jenny. This is the sight of the archaeological digs you have been reading about for several years. It is located in Kingston, just north of Plymouth. Take route 3A north. You will see a sign for Rocky Nook/Gray Beach; right after that is Howland Lane; turn right. Go about one-third of a mile. See a sign for Cole; Standish. Right after that you will see the big boulders on the right, pull over here. You cannot see our large granite monument from the street, so you will have to walk a very short distance up the hill in the woods. The Joseph Howland monument is across the street. There are markers and a kiosk with information.

Jenney Interpretive Centre

Some of Plymouth’s finest 17th Century Educational Living Historic Tours:

Discover Plymouth’s History - A Walking Tour:

For those who hunger for true history! Join Leo, historian and your guide, and discover the sacrifices the Pilgrims made to give our country the freedom we so richly enjoy today. Hear about the challenges they faced and learn the truth about the part their faith in God played in their journey to America and in their daily life. Is Plymouth Rock REALLY the true landing place of the Pilgrims? Find out why we believe it is! Discover little known facts and hear interesting stories of American history as you walk the same paths the Pilgrims walked. These tours will help you to see history in a whole new light! Programs and tours include:

Forefathers Monument

Stories of the American Covenant

Pilgrim Economics: Business Not as Usual

Conversations with a Pilgrim Series

The Pilgrim Pursuit of Happiness

The Abolitionists

Discover Plymouth’s History Indoor Presentation

The Cornerstone of Society: Family

To book a tour or a program reservation: Please call **508-747-4544** or email us at info@thejenney.org. Please leave details on which tour(s) or program you are interested in, the date and time you would like, your name, the number of adults and children in your party and a cell phone number where we can contact you. You may reserve your tour online at: <https://thejenney.org>.

The Jenney Interpretive Centre is located at **48 Summer Street**, right down the street from Howland House.

Leyden Street

This street runs from Brewster Gardens near the water up to First Parish Church. It was named for Leyden, Holland, a refuge for Pilgrims. There are tablets on the houses that give names of original buildings.

Burial Hill

We will meet here on **Friday, August 8 at 4:30** to place a wreath at John Howland's grave. There are two ways to enter the cemetery. One is via the stone steps near First Parish Church (now Mayflower Meetinghouse). As you face the Church, it is to the right. It is a lovely walk, but a very steep hill. For an easier walk, you can park in the lot on South Russell Street. Don't miss the stunning view of the water! There are tours on the first Saturday of the month. The one closest to our meeting is on **August 2 at 1:00**. The theme of this tour is "The Revolutionary Warrens." The tours are free and open to the public; no reservations are required. Please see www.plymouthantiquarian.org or www.pilgrimhall.org for more information.

Pilgrim Hall Museum

The Pilgrim Society began in 1820 and the museum building was completed in 1824. It is the oldest public museum in continuous use in America. Visit Pilgrim Hall and learn once again the dramatic story of the Pilgrims. See items that actually came over on the Mayflower such as Myles Standish's sword, the Bibles of John Alden and William Bradford, the Brewster chest, the Warren napkin and the Peregrine White cradle, all displayed in imaginative settings within the historic 1824 building. Also on display is the Loara Standish sampler, embroidered by the teenage daughter of Myles Standish and the earliest made in America, the portrait of Edward Winslow - the only known portrait of a Mayflower passenger, as well as the baby shoes, portrait and tombstone of Josiah Winslow, son of Susanna White and Edward Winslow and the first native-born governor of Plymouth Colony. The children will enjoy the "treasure hunt" activity sheets that are fun and educational. The Museum features permanent, changing and online exhibits. The museum is located at **75 Court St. (Rte 3A)**. **508-746-1620**. www.pilgrimhall.org

Plimoth Patuxet Museums (formerly Plimoth Plantation)

It is like a blast to the past! You really feel like you are in the 17th century in this recreated 1627 village complete with Pilgrims, Native Americans, crafts, and much more sure to please. There are costumed interpreters who will teach you about their lives and crafts. Located on **Route 3A** about 2 ½ miles south of Plymouth. **137 Warren Ave.** Our annual meeting and banquet will be held here. **508-746-1622**

Continued on page 8

Mayflower II

Replica of our beloved ship. Go aboard her and see how our ancestors lived and survived on the voyage. Located in **Plymouth Harbor** near Water Street....in the water.

Plymouth Rock

An icon of Pilgrim life, under a classical canopy located at **79 Water Street**.

Plymouth Grist Mill (formerly Jenney Grist Mill)

This is the site of the first known mill in Plymouth, built in 1636 by John Jenney. After more than a decade of grinding corn by hand in wooden mortars, the colony authorized the construction of a water-powered corn grinding mill on Town Brook. John Jenney was given permission to run the mill. Today, the Plymouth Grist Mill is a working mill that uses water power to mill organic corn into delicious freshly ground cornmeal on the 200 year old French Buhr millstones. The Mill is located at **6 Spring Lane**. For more information, please see: <https://plimoth.org>.

Mayflower Society House

Across the street and up the hill from Plymouth Rock is the historic Mayflower Society House – an 18th Century home originally built by Edward Winslow, great-grandson of the Pilgrim Edward Winslow. This elegant home is known for its flying staircase, antique furniture, and formal gardens. Unfortunately, it will not be open for tours in 2025 for historic restoration. You may still visit the **Colonial Revival Garden**. The house is owned by the General Society of Mayflower Descendants and is located at **4 Winslow Street. 508-746-3188**.

The National Mayflower Meetinghouse (First Parish Church)

Located in the center of town you will see the great stone church at the head of Leyden Street. This is the 4th building to occupy this precise spot, the first being in 1648. In 1899 the **Howland Society** presented the church with the **Memorial Pulpit** in memory of John Howland and Elizabeth Tilley. This is the site of the congregation founded by the Pilgrims in 1620 and is located at **12 Church Street**. For tours call **508-746-3188, ext. 25**. <https://themayflowersociety.org/visit/mayflower-meetinghouse/>

Coles Hill and the Sarcophagus

Burial area of the Pilgrims who died the first winter. The 1921 Sarcophagus contains the bones of the first settlers that were washed out of the hillside by rainstorms before streets were paved. Located across the street from the Plymouth Rock canopy at **35 Carver Street**.

Brewster Gardens

One of the loveliest spots in Plymouth. It was here at Town Brook where the Indians caught herring and taught the Pilgrims how to use them for fertilizer. Reed grew here that was used for thatching their first buildings. This is the original garden plot granted to Elder William Brewster. The Pilgrim Maiden Statue is here as well. The garden is located on Water Street at the foot of **Leyden Street. 508-747-1620**.

National Monument to the Forefathers

This beautiful granite monument is 81 feet tall and was erected in 1889. It honors the passengers of the Mayflower and features allegorical figures of the virtues of Faith, Morality, Education, Law and Liberty. It is free to visit. The Monument is located at **72 Allerton Street. 508-747-5360.**

The following are out on the Cape, and worth the drive:

The 1717 Meetinghouse

This is one of the oldest meetinghouses in the country and has connections to the Howland, Chipman and Gorham families. Meetinghouses were essential to the life of a town, used for meetings, community events and worship services. Nearby is the Lothrop Cemetery where Hope Howland Chipman was buried in 1683. Her headstone is only one of two the Howland children we have located. The stone is in remarkable condition. The meetinghouse is located at **2049 Meetinghouse Way, West Barnstable. 508-362-4445. <https://www.1717meetinghouse.org>**
Email: info@1717meetinghouse.org



This is the wreath placed on John Howland's grave in 2023.

Bourne Historical Society: The Museums at Aptucxet

The Museum covers 12 acres and includes a replica of a 17th century Trading Post, the 19th century Gray Gables Railroad Station, and the Joseph Jefferson Windmill. Located at **6 Aptucxet Road, Bourne. 508-759-8167**

The Bourne Historical Society is located at **30 Keene Street, Buzzards Bay (Bourne).** Same phone number. <https://bournehistoricalsociety.org>
Email: BourneHistoricalSociety@comcast.net

Note: There is a connection to the Howland's: Emily Howland Bourne. Emily was instrumental in supplying the funds for buildings and for her philanthropical endeavors. She is a descendant of Henry Howland, John's brother, and our distant cousin.

In Memoriam

Agnes Tylle

Buried June 7, 1582
Great-grandmother of
Elizabeth Tillie

Rose Hurst

Died July 23, 1601
Grandmother of Elizabeth Tillie

Henry Howland

Died May 17, 1635
Father of John Howland

Happy Birthday!

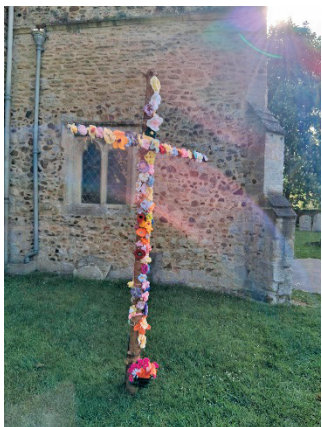
Robert Tilley

May 1540
Grandfather of Elizabeth Tillie

Elizabeth Tilley

Baptized Aug. 30, 1607

NEWS FROM ENGLAND



Hello From Fenstanton

Hello dear friends, how are you?

Just a few weeks ago we celebrated Palm Sunday, Holy Week and Easter and what a busy time we had. Our youth group (with some help) organised a family style service for Palm Sunday in St Peter & St Paul's Church. They chose the hymns and even wrote and performed one of their own songs. They gave us a different perspective to Palm Sunday that made us really engage with what it might have been like to be part of the excited crowd waving palm branches, as Jesus rode into Jerusalem. In the afternoon we filled the church with different activities and invited people to engage with Easter week through various ways. One of the things to make was a Holy Week calendar, a bit like an ad-

vent calendar, with a door to open each day leading up to Easter Sunday. The children from one family not only made these but took them on holiday (vacation) with them, proudly displaying the calendars and opening the doors each day.

As Holy Week progressed, the Easter Garden began to arrive, and by Easter Sunday, it was transformed into a beautiful, colourful garden as you can see from the photo. I hope you can see from the photo that the pathway of small stones leads from the twig crosses to the empty tomb.

In recent weeks we have welcomed several visitors to the parish church, all seeking to know where their ancestors connected with John Howland, with those who are direct descendants finding their visit particularly meaningful.

No matter whether you are religious or not, all are welcome to visit the church and maybe you, too, will gain that sense of those who have walked before you, on the stone floor which would have been there at the time of the Howland family.

May you know God's blessings in your travels.

Rev Rosie



Hello From Hertlow

Dear Friends,

Greetings from sunny Bedfordshire! The countryside is now bedecked in glorious green with splashes of white May blossom and St Mary's church tower glows gold against blue in the afternoon sunshine.

Reflecting on the last few weeks, I am so grateful that we have been able to partake so fully in the drama of Holy Week and the joy of Easter. Between the two churches of the Benefice there were services every day from Palm Sunday to Easter Day. On Monday,

Tuesday and Wednesday the ancient evening office of Compline was said, with an address given by our Vicar. On Maundy Thursday a number of us attended the Chrism Eucharist at St Alban's Cathedral. This being our Bishop's last Chrism Eucharist before he retires, the vast nave of the cathedral was filled as all who are called to ministry within the Church renewed their commitment to service and the Holy Oils were blessed and distributed to the parishes for use in Holy Baptism and the anointing of the sick and dying. A very moving service, followed by refreshments and spiced 'Alban buns'.

In the evening, the Eucharist of the Last Supper was celebrated at St Andrew's, Langford, followed by the stripping of the sanctuary and Watch before the Blessed Sacrament, leading us to meditate on the garden of Gethsemane and the betrayal and imprisonment of our Lord – 'could ye not watch with me one brief hour?'

On Good Friday, at home, it was time to make Hot Cross Buns – marked with the cross, the spices reminding us of those the women brought to the tomb in fulfilment of the burial customs of the time of the Crucifixion of Jesus. The afternoon service focuses our minds on the mystery of the cross and is a time for quiet contemplation of the ultimate sacrifice made by Jesus in atonement for the sins of the world, which is recalled in our Sunday services throughout the year.

The morning of Holy Saturday is a time of fevered activity and preparation. Flower arrangers are busy in creating displays fit for the coming celebration. The Easter Garden is made ready and the hangings and decorations, stripped away two days before, are restored to their rightful places. The evening service, at St Mary's this year, has an atmosphere of excitement and anticipation. The church building is in darkness and the congregation gathers outside for the lighting of the Paschal fire (a tense moment for yours truly, in charge of lighting!) and the Paschal Candle is marked with the cross and the year then, hopefully, lit (those who have been to St Mary's will know this is a breezy corner!). The lighted candle is carried into the dark church reminding us of the dominion of Christ over the powers of darkness and the Exsultet, the great proclamation of Easter is sung. It is my very great and humbling privilege to have sung this for many years. 'Christ is risen! – He is risen indeed!' is proclaimed and the congregation ring bells while a fanfare is played on the organ before we launch into the Gloria, our grateful hymn of praise and thanksgiving.

Then comes Easter Day, with the fullness of life restored and the Eucharist in both churches in joyful celebration of our Lord's victory over death giving hope to all humankind.

And so life rolls on. A bake sale is planned to raise money for plants to enhance St Mary's huge churchyard and Confirmation classes will begin soon. Ascension Day (May 29) will be celebrated in conjunction with the neighbouring Benefice of Clifton, Southill and Haynes; Bible study resumes and the monthly prayer breakfast alternates between our two churches.

No doubt things were very different in the 17th century when our ancestors set sail for the New World, and in years to come they may be different still. Yet the life, work and witness of our church continues, as it has for nearly 1,000 years in the service of God and our village.

From all of us here, may I wish you a glorious summer.

Your friend and (distant) cousin,

James Burgess

Dues

Peter Arenstam, Executive Director

Periodically, I receive inquiries from members seeking information about annual dues. Questions about when to pay and how to pay dues are common enough that I thought I would provide some clarifying information. Dues are an important way we can support the work of the Howland Society maintaining and displaying the history of John Howland and Elizabeth Tilley.

Please Pay Dues by June 30

The Society requests that dues be paid by June 30 each year. We send out a notice in May to each member that has your membership number, whether you are a Life or Annual member, and the amount owed. Currently, annual dues are \$35.00. Life members receive the dues notice so that we can stay in contact with all members (requesting a change of address as necessary) and to give all members an opportunity to help support the Society as they may wish. A remittance envelope is included with the dues notice to facilitate communication with the Society. We know that life is busy for all of us, so dues may be paid at any time. If you miss the June 30 deadline – don't worry- your membership will remain active – and you can send along payment within the calendar year.

You Have Several Options for Dues Payment

There are multiple ways to pay your dues. The most traditional method is to pay by cash or check returned to the Society in the remittance envelope provided with the dues notice. You can also pay on our website, www.pilgrimjohnhowlandsociety.org in the member area.

If you find you are having trouble using our website to pay your dues there are usually two reasons. First the email you are using doesn't match the email you used when you joined the Society, or you didn't provide an email, and we have none on file for your membership. Second, if you haven't paid your dues for more than a year, (we have a built-in year's grace period on our site,) your membership is frozen on the site. That doesn't mean you aren't a member any more it only means you need to pay your dues to catch up. If your membership goes more than two years without payment, a \$25.00 reactivation fee will be charged before your membership will be active on the website again.

For International Members

You may have had trouble in the past paying dues on our website. We have a "Square" account through which you can pay. A link to it is on our Homepage which directs you to our secure Square account. Scroll down the Homepage and click on the Square link. The remittance envelope also has a space where, if you wish, you can provide credit card information and mail that back and we can charge your account for dues or a donation.

Reach Out With Questions

If you have questions regarding dues or anything else Howland Society related, please connect with me via email at: executivedirector@pilgrimjohnhowlandsociety.org or call the Jabez Howland House at **1-508-746-9590** and as always we are grateful for your support of the Pilgrim John Howland Society. Thank you!

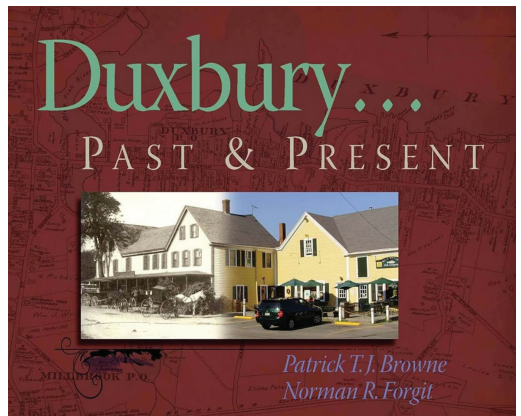
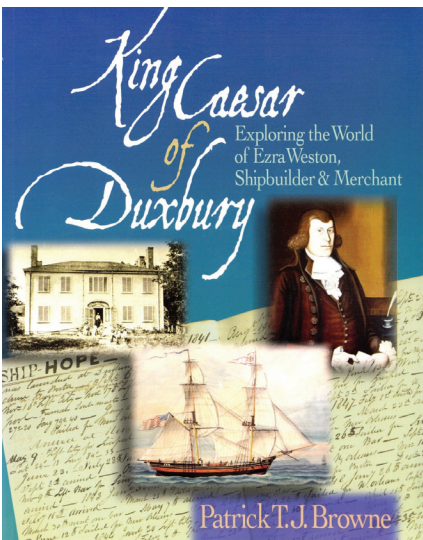
Friday, August 8 Banquet Speaker: Patrick Browne



Patrick will be speaking about *“Plymouth’s Patriot and Loyalist Rivals during the Revolutionary Era, and some Howlands on Both Sides.”* This program covers the major figures in Plymouth at the time, some of the specific conflicts, and some Howland participants including Thomas Southworth Howland, Consider Howland, and others. This is a wonderful way to prepare to celebrate our Nation’s 250th anniversary.

Patrick Browne is a historian, writer, and Executive Director of the Plymouth Antiquarian Society. He holds a Ph.D. in History from Boston University, as well as an M.A. in History and a B.A. in English from the University of Massachusetts Amherst. He previously served as a Lecturer at Boston University, where he taught courses on the American Revolution, the History of Boston, and the Civil War Era. Before beginning his doctoral studies, Patrick held leadership roles in public history as Executive Director of both Pilgrim Hall Museum and the Duxbury Rural and Historical Society. He is the author of two books on local history and has published scholarly articles in academic journals. His award-winning dissertation explored the work of civilian relief workers and Union veterans during the Civil War.

In addition to Dr. Browne’s professional life, he has served in several community activities including serving on the board of directors for Plymouth 400, the Plymouth County Convention and Visitors Bureau and was the founding chairman of Backroads of the South Shore, a consortium of South Shore historical museums.



These are two of Dr. Browne’s books.

Editor's Wish List

To have a record number of members attending our Banquet and Annual Meeting.

Stories and photos for "**Howland's in the News.**" We know you are doing lots of great things and your cousins want to know about them. We are making history, and our descendants will enjoy reading what we are doing.

The "**Great Bible**" Elizabeth Tilley Howland left to her son-in-law, **James Brown**. Where is it?

John Howland's **original signature**. With all he signed, there must be one somewhere.

Photos of paintings of any Howland descendant from before 1850.

On page 403 of Franklyn Howland's book, he mentions an **English gourd shell** handed down in the family which may have been on the Mayflower. It is described as "...of dark mahogany color, 16 inches long, larger on one end than the other, slightly crooked and will hold 3 to 4 quarts. Tradition says it was brought over on the Mayflower filled with gunpowder..." In 1885 it was in the possession of **John Newton Howland**, born 13 Sept. 1830, married to **Sarah Stebbins** in 1857. They had a son, **John Augustine Howland**, born 1869. Where is it now?

The Spring 2005 Children of the American Revolution Magazine, page 46, mentions a Lyons M. Howland, the first Junior National President of C.A.R. and WWII hero. Is he our **Lyons Mills Howland**, member #550? Are any of our members related to Lyons?

Actors **Jobyna** and **Olin Howland** were children of **Job A. Howland** and **Mary A. Bunting**, who were married 4 Nov. 1875, Indianapolis. **Job A. Howland** was the son of **Orville Howland** who died in 1852, Saratoga, NY. Orville had a brother David. Anyone know Orville and David's line?

On pages 6-9, we have a list of places to visit in the Plymouth area. Did I miss any of your favorites?

When sending photos, please label with who, what, when and where they were taken.

As we prepare to celebrate our country's 250th anniversary, beginning in **2026**, I would like stories (and hopefully photos) of Howland descendants that were in the American Revolution. I hope we will be honoring many. Please do not send anything before December 31, 2025. Our **Quarterlies** are March, June, September, and December. Submissions must be received by the 1st of the month prior to that date. For example, for the March issue, by February 1.

One more wish: Information on the Howland pin featured in the December 2024 *Quarterly*. I believe it is from the Howland Department Store opened by John G. Howland in 1887. Anyone know?



New Members

PJHS Registrar Jean Albert reports four new members this quarter. They descend from four of the 10 Howland children and live in four different States. Welcome cousins!

4149 Elizabeth
Merle A. Nunn
Canton, GA

4150 Lydia
Marilyn F. Beall
Eau Claire, MI

4151 Jabez
Ellen L. Anderson
Norton, MA

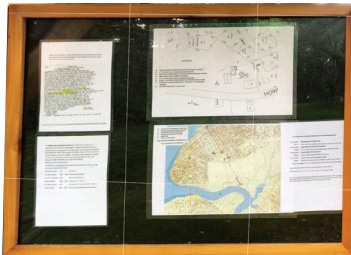
4152 Desire
Blyse N. Soby
Colchester, CT

From the Editor – Gail Ann Adams

I am so excited at the prospect of creating a beautiful meadow at the Joseph Howland site at Rocky Nook. With Eldon Gay’s leadership, the Rocky Nook property has been transformed. We have continued archaeological digs, beautiful signs were made by Everett St. Louis, and a kiosk was built by Peter Arenstam. These features make it possible to get a feel for how our ancestors homestead was laid out. Thank you Eldon, Everett, Peter, and for our deceased who worked hard at Rocky Nook, including Richard Clary, Jonathan Stubbs and John Howland. This is not just for our Society, but for all interested in history.

I have put in a wish list, hoping our members have information I have been looking for. I can’t wait to hear from you!

If you have never come “home to Plymouth” please consider coming. We have a fantastic Society and have a great time getting to know each other and renewing old friendships. Make this the year you come and begin to get to know your extended family!



“Other” Mayflower Family Societies

Do you have another Mayflower ancestor besides the Howland's and Tilley's? If so, you may be interested to know that there are several other Mayflower family societies. I have been in contact with them to get the most current information. A few did not respond, so I don't know if theirs is the latest. I don't mind sharing this list, but if you publish it, please give the Howland Quarterly the credit.

Meeting notices, if known, are listed at the end of their Society information.

Note: There is a new website to help coordinate making the Family Society information easily available. Please see: <https://pilgrimfamilysocieties.org>. You click on the family name and there are links to specific pages for joining, meetings, scholarships, etc.

Alden Kindred of America, Inc.

Anne K. Cobuzzi, President

acobuzzi@icloud.com

Desiree Mobed, Executive Director

dmobed@alden.org

info@alden.org

www.alden.org

Reunion: Aug. 1-3, 2025,

Duxbury, MA

www.billingtonfamilysociety.org

<https://m.facebook.com/groups/1490353674586226?ref=share>

Governor William Bradford Compact

Henry “Chip” Bradford, President

22 Brewster Rd.

West Bridgewater, MA 02370

bradfordhenry@hotmail.com

www.mygwbc.org

Pilgrim Isaac Allerton Society

Andrew Raybold Whipple, Governor

P.O. Box 21

Isle La Motte, VT 05463

governor.isaacallertonsociety@gmail.com

www.isaacallerton.com

We meet together in Pilgrim fellowship with Isaac and Mary Allerton descendants or those interested in the Allerton family through Zoom meetings or in-person meetings. A general meeting of members is held in Plymouth, Massachusetts every three years running concurrently with the General Congress of the Mayflower Society.

Billington Family Society

Bert Lundberg, Governor

71 Lancaster Rd., Freehold, NJ 07728

Cell: 732-616-3862

bertlundberg6@gmail.com

billingtonfamilysociety@gmail.com

Contact is James Preston

606 Concord Way

Blairsville, GA 30512-3176

James628@aol.com

The Elder William Brewster Society

Barbara-Lee Kelly, Historian

P.O. Box 1162

Plymouth, MA 02362-1162

blee1090@rocketmail.com

www.brewsterfamily.org

Pilgrim Peter Brown Society

Elizabeth Werner, Governor

ehwclw@wowway.com

26625 State Road 590, #222

Clearwater, FL 33759

727-797-8488

Sandra Sauers, Deputy Governor

ssauersppbs@gmail.com

Sheryl Schilling, Historian &
Newsletter Editor

Sschilling1620@gmail.com

www.pilgrimpeterbrownsociety.org

Pilgrim Francis Cooke Society

Dianna Saario, Genealogist

40708 Balch Park Rd

Springville, CA 93265-9749

559-280-3450

genealogist@pilgrimfranciscookesociety.org

Facebook:

<https://www.facebook.com/groups/196584422381>

<https://pilgrimfranciscookesociety.org>

The Pilgrim Edward Doty Society

Jeff Given, Governor & Membership

PEDS.governor@gmail.com

www.edwarddoty.org

Eaton Families Association

Doug MacMillan, President

dougiemac@comcast.net

Membership:

Eatongenealogy.com

The Fuller Society

Jane Ordway Carman, Governor

janeordwaycarman@gmail.com

Linda Hoffman, Historian & Membership

42 Sugar Maple Ln, Tinton Falls, NJ 07724

lsquinter@aol.com

www.thefullersociety.org

Meeting: Sept. 24-28, 2025,

Branson, MO

Pilgrim Hopkins Heritage Society

Susan Abanor, Governor

governor@pilgrimhopkins.com

Kenneth Whittemore, Historian

P.O. Box 712543

Santee, CA 92072-2543

historian@pilgrimhopkins.com

www.pilgrimhopkins.com

Thomas Rogers Society, Inc.

Steve Rogers, President

33 Bayberry Road

Danvers, MA 01923-1535

978-774-0604

steve@rogersemail.net

www.thomasrogerssociety.com

Pilgrim Henry Samson Kindred

Guy Moellendorf, Governor

Governor@phsk1620.org

Gail Birkshire, Registrar

genealogist@1620.org

Susan Abanor, PHSK DNA Project Leader

dna.project@phsk1620.org

Website: PilgrimHenrySamsonKindred.org

PHSKindred@yahoo.com

For information regarding the Samson DNA

Project at FamilyTreeDNA, please contact

Susan Abanor.

We meet six times per year by Zoom; Every three years at GSMD Congress, we meet in person for lunch and tour.

Soule Kindred in America, Inc.

Randy Breese, President

Randy.breese@soulekindred.org

Andrew Turner, Membership

Andrew.turner@soulekindred.org

www.soulekindred.org

Society of Myles Standish Descendants

Charles Willard, Membership Chair

smsd@mylesstandishsociety.org

<https://Mylesstandishsociety.org>

Facebook:

<https://www.facebook.com/groups/1031675716847712>

The Warren Cousins

Martin W. Beerman, President

402-709-3786

TheWarrenCousins@gmail.com

Marti Bobertz, Registrar

Marti.bobertz@gmail.com

www.TheWarrenCousins.com

The Pilgrim William White Society

Patrick White, Governor

patrickwhite@email.com

<http://www.thepilgrimwilliamwhitesociety.org/>

Winslow Heritage Society

Craig Failor, Governor

407 N. Lombard Ave.

Oak Park, IL 60302

Continued on page 18

Winslowheritagesociety1@gmail.com
Facebook: [winslow.heritage.society](https://www.facebook.com/winslow.heritage.society) <http://winslowheritagesociety.org>

Delano Kindred
Thomas Delano, President
www.delanokindred.us

Mayflower Related Family Societies:

The Society of Descendants of Robert Bartlett of Plymouth, Mass.

James W. Lucas
107 Ellisville Drive
Plymouth, MA 02360-1257
historian@bartlettsociety.org
www.bartlettsociety.com
Meeting: Aug. 8, 2025, Plimoth Patuxet
Museum; dinner with the Howlands

Harlow Family Association
Sue Painter, Membership
Harlow.membership@gmail.com
Website: www.Harlowfamily.com
There will be a reunion in Plymouth,
MA, August 23-24, 2025.

Nickerson Family Association
Contact: Debra Lawless, Executive Director
Wmnick1107@gmail.com
P.O. Box 296
North Chatham, MA 02650-0296
<https://nickersonassoc.com/>
Our annual reunion is Sept. 5-7, 2025,
in Sandwich and Chatham, MA



Did you know that
The Pilgrim John
Howland Society is
the oldest Mayflower
family society?
It began in 1897,
followed by The Alden
Kindred in 1906.

RESERVATION FORM

PJHS One Hundred & Twenty-Eighth Annual Banquet & Meeting

Reservation must be received by **Friday, July 18, 2025**

Banquet - Friday, August 8, 2025 - Cost \$65

Name(s) _____

Cost \$65 x _____ Total: _____

Annual Meeting Luncheon - Saturday, August 9, 2025, Cost \$35

Name(s) _____

Cost \$35 x _____ Total: _____

Note: Children 12 and under are free

Total Amount Enclosed: _____

Which of John & Elizabeth Howland's children do you descend through?

Email address: _____

Phone number: _____

Is this your first time attending? _____

You may also register and pay online: www.pilgrimjohnhowlandsociety.org

Please make checks payable to:

The Pilgrim John Howland Society & mail along with registration form to:

The Pilgrim John Howland Society

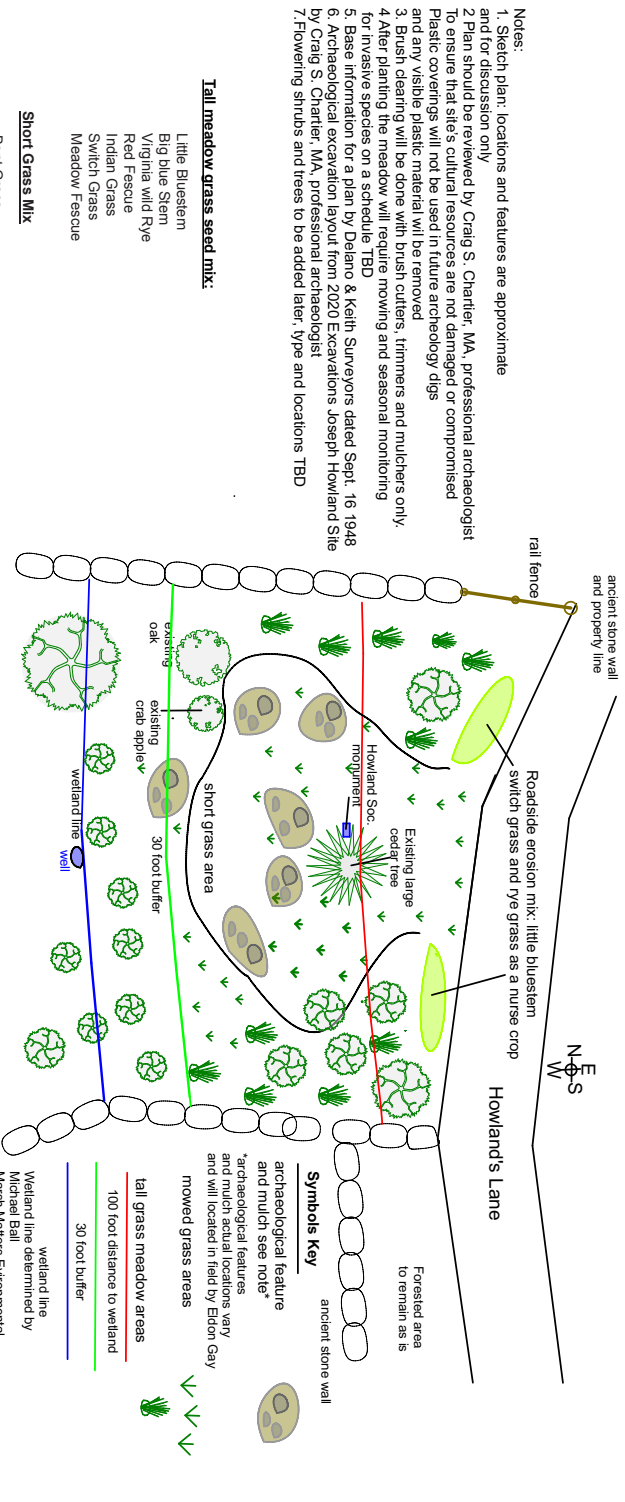
P.O. Box 1479

Plymouth, MA 02362-1479



Bob Hoxie's plan for the Joseph Howland site at Rocky Nook.

See story on page 5.



- Notes:
1. Sketch plan, locations and features are approximate and for discussion only
 2. Plan should be reviewed by Craig S. Charter, MA, professional archaeologist To ensure that site's cultural resources are not damaged or compromised
 3. Plastic coverings will not be used in future archaeology digs and any visible plastic material will be removed
 4. Bush clearing will be done with brush cutters, trimmers and mulchers only.
 4. After planting the meadow will require mowing and seasonal monitoring for invasive species on a schedule TBD
 5. Base information for a plan by Delano & Keith Surveyors dated Sept. 16 1948
 6. Archaeological excavation layout from 2020 Excavations Joseph Howland Site by Craig S. Charter, MA, professional archaeologist
 7. Flowering shrubs and trees to be added later, type and locations TBD

Tall meadow grass seed mix:

- Little Bluestem
- Big blue Stem
- Virginia wild Rye
- Red Fescue
- Indian Grass
- Switch Grass
- Meadow Fescue

Short Grass Mix

- Bent Grass
- Red Fescue
- White Clover
- Sheep Fescue

Symbols Key

- archaeological feature and much see note*
- *archaeological features vary and much actual locations vary and will located in field by Edou Gay mowed grass areas
- tall grass meadow areas
- 100 foot distance to wetland
- 30 foot buffer
- wetland line
- Wetland line determined by Michael Ball Marsh Matters Environmental Jan, 25 2025



The purpose of the project is the conservation of Joseph Howland House archeology site for visitors and wild life to share the open space that was once an orchard and meadow. Removing the under growth will allow the exposure of the ancient stone walls that are the oldest in New England. This plan will restore it to its original state and allow management of the area for conservation purposes in a natural setting as well as serving as a buffer for the wetlands behind the tree line.

Joseph Howland Site Historic Meadow Restoration Plan
 *revised 3/29/2025
 Great Hill Horticultural Services
 Bob Hoxie garden designer